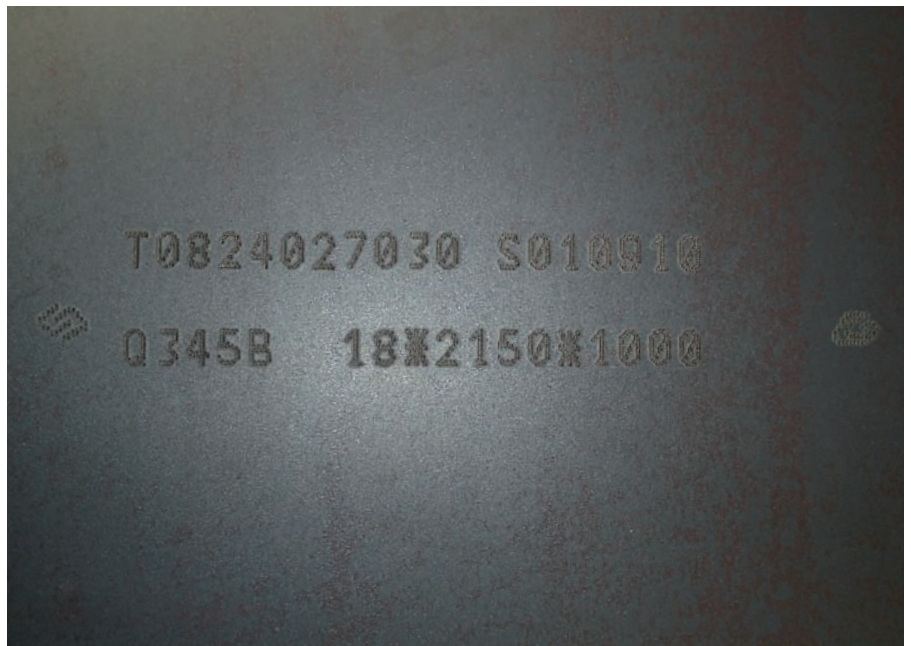


Puma Speedy for Plates

This system marks steel plates by our PUMA Speedy multiple pin punching head assuring a cost effective solution for high quality marking at high speed. Different configurations are available to comply with Customer specifications and installation lay out.

Main Marking Features

- Cold and Hot application up to 950 °C
- Marking position: on top surface
- Marking orientation: crosswise or lengthwise (perpendicular or parallel to plate transport)
- Static (plate stopped under the marking machine)
- Symbols: letters, numbers, special characters (logos), Data Matrix code
- Height of symbols from 3 mm to 25 mm, in one or more lines that can be printed simultaneously
- Font based on dot matrix: 7 , 9, 12 or 16 dots in height



System configuration

- Structure, being a cantilevered beam (fixed or swivelling) or a bridge overcrossing the plate conveyor line
- One or more PUMA Speedy marking heads
- Pneumatic panel
- Power and control cabinet
- Control desk with HMI
- For hot applications, the system is equipped with a kit for thermal protection

Functional features

Flexible automation functions assure precise positioning of the markings, different dot matrices, penetration force adapted to material hardness.

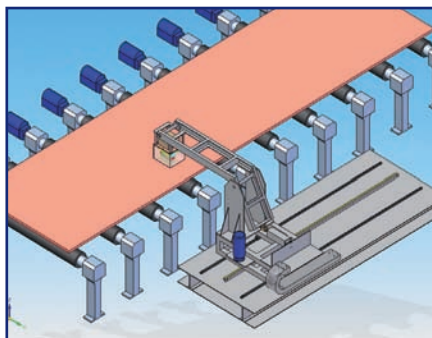
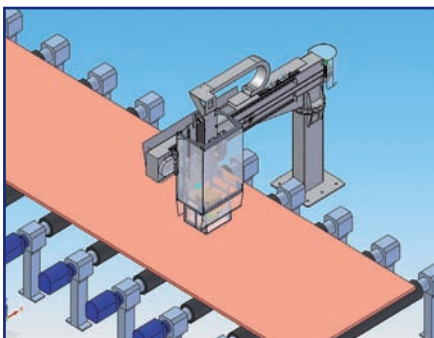
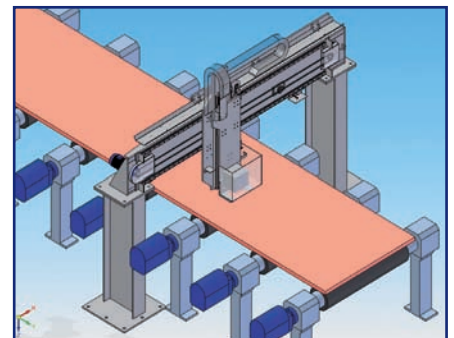
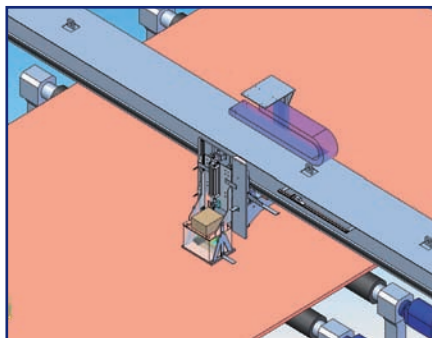
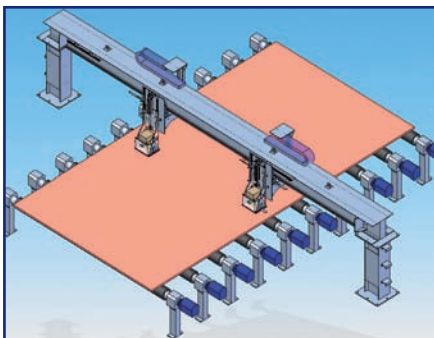
Many parameters can be adjusted / selected by the operator via Control Unit, f.i.:

- font selection
- Characters dimension (width, compression, height)

Host connection (Ethernet, Profibus or other common industrial fieldbus)

Optional function

- Tools for editing fonts and modifying parameters
- Marking a *Data Matrix* code readable by a standard reader (combined marking / reading function to achieve automatic tracking of plates)
- Bright white line (produced by a TEMA Mono unit) that highlights the punched area



Certif. n° 1235/98



Certif. n° EMS-1724/S

